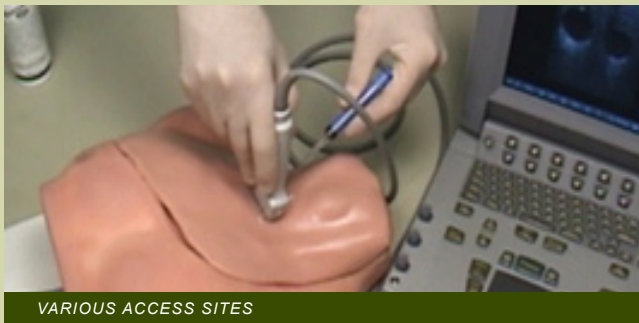
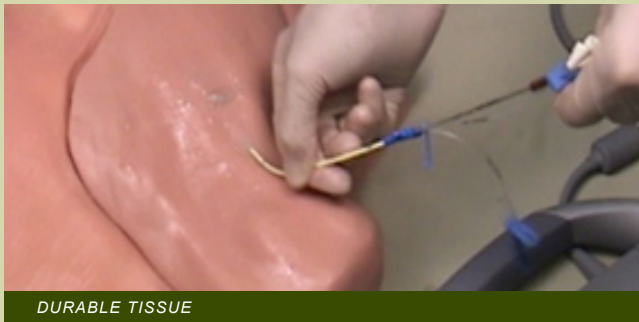


# Central Line Training Package

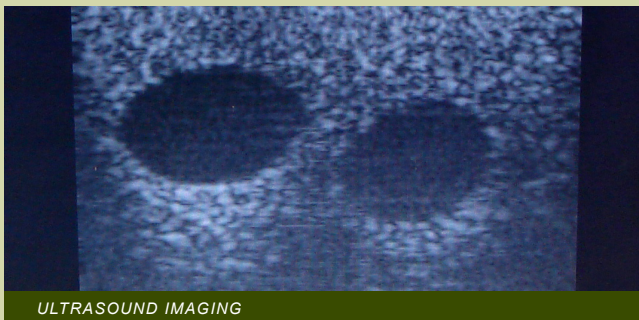
This package includes a CentralLineMan System, one extra replaceable tissue, and 25 non-sterile guidewires. CentralLineMan is the ideal simulator to enhance any Central Vascular Catheterization training program. This trainer is ultrasound compatible, providing a very realistic image and the system's replaceable tissues are ultra-durable and will withstand hundreds of needle sticks and dozens of full catheterizations.



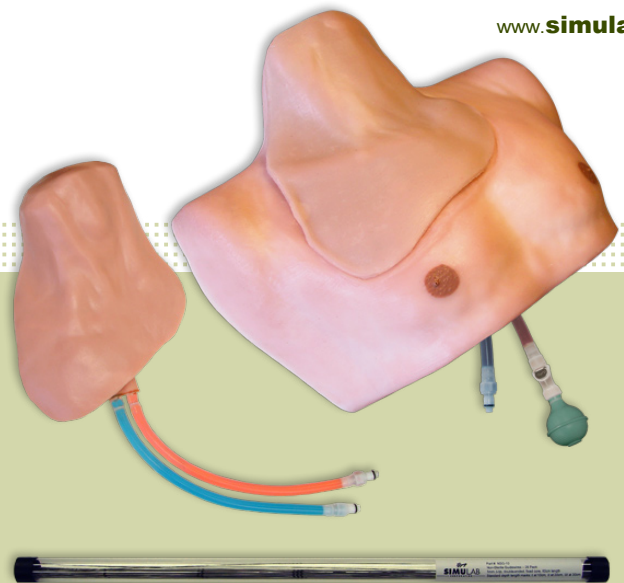
VARIOUS ACCESS SITES



DURABLE TISSUE



ULTRASOUND IMAGING



#### PACKAGE INCLUDES:

- > CentralLineMan™ System
- > Replaceable CentralLineMan Tissue
- > 25 Non-Sterile Guidewires

#### CENTRALINEMAN ACCESS SITES:

- > Subclavian
- > Supraclavicular
- > Internal Jugular

#### CENTRALINEMAN FEATURES:

- > Ultra-durable replaceable tissues withstand hundreds of needle sticks and dozens of full catheterizations
- > Realistic ultrasound image
- > Arterial pulse is palpable externally and also visible under ultrasound
- > Anatomically correct human torso with landmarks
- > Differentiates arterial and venous blood to show positive or negative results
- > Quick set up: tissues are self-contained and come pre-filled with blood
- > Easily adjustable venous pressure to simulate complications

#### PRODUCT INFORMATION:

- > Part #: CLTP-10
- > Price: \$1,950 ~~\$1,695~~ (until 11.30.10)